

Innovation Unlocking Potential of a Gold and Base Metal Camp Vulcan Gold Belt – Sullivan Mining Camp, SE British Columbia

Investment Highlights.

- District Scale Exploration Target: 10 to 100 million ounces gold / 500 to 1000 million ounces silver.
- Regional prolific mineral district analogous to world class Abitibi gold and base metal district.
- Two intersecting regional structures associated with Vulcan Gold Belt and Sullivan Mining Camp.
- Target type: Orogenic and Magmatic Gold Trend – Fort Knox (>5mm ozs), Telfer (>30 mm ozs).
- Vulcan Gold Belt - estimated 1.5 million ounces of placer gold produced since 1864 gold rush.
- Significantly underexplored - No gold source identified to date - Only 150 drill holes on entire trend.
- First time 100% owned mineral rights consolidated covering 520 km² over 60 km strike.
- Pipeline of Gold and Base Metal (silver, lead, zinc) targets – 20 large targets identified to date.
- Drill Ready Projects:
 - Gold Shear Property
 - High Grade David Gold Zone hosting historical resource estimate* of 96,000 tonnes grading 13.08 g/t gold (*non 43-101, uncut).
 - PJX drill tested structures intersect gold mineralization. Open to depth and on strike.
 - Vine Property – Sullivan silver, lead, zinc deposit style target.
 - Demonstrated base metal mineralizing system.
 - Two PJX confirmed massive sulphide drill intersections to-date within 1.5 km by 1.5 km geophysics target.
- Extensive project infrastructure, road accessible.
- Local community support.

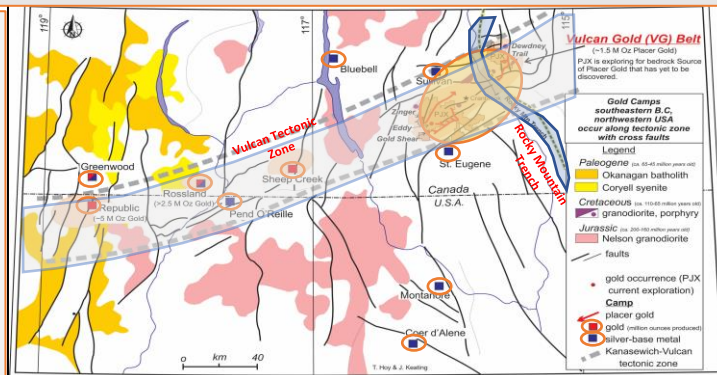
Vulcan Tectonic Zone - Washington State to SE British Columbia

Prolific mineralizing systems hosting world class gold camps and deposits:

- Republic
- Greenwood
- Rossland
- Sheep Creek
- Cranbrook Placer Gold Camps (Vulcan Gold Belt)

Silver-Lead-Zinc or Silver-Copper deposits:

- Sullivan Mine
- Pend O'Reille
- St Eugene
- Montanore
- Coeur d'Alene



Management and Board of Directors

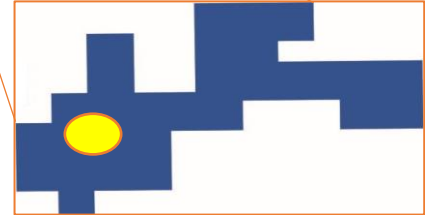
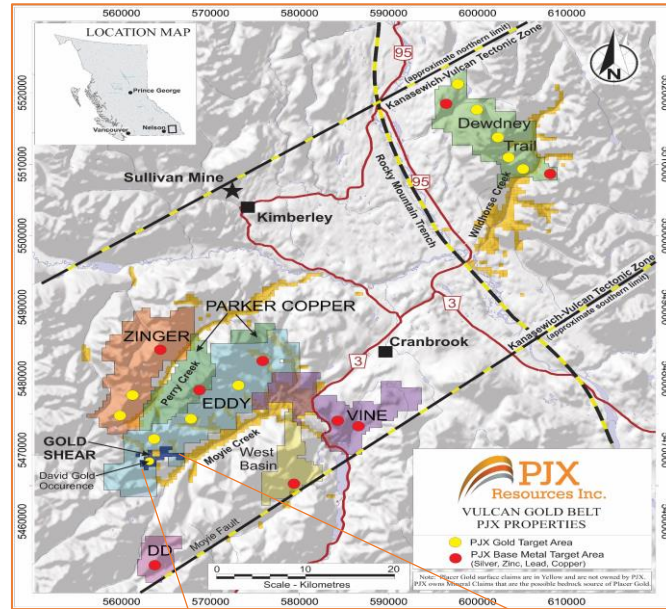
- John Keating - Chairman, President and CEO
- Linda Brennan – CFO, Director
- Vic Bradley - Director
- James Clare – Director
- Joe Del Campo – Director
- Trygve Hoy – Director
- Kent Pearson – Director

Capital Structure

Market Capitalization	\$14.6 mm
Working Capital	\$0.5 mm
Shares Outstanding	108,224,294
Options	10,812,500
Warrants	42,945,612
Fully Diluted	161,982,406

Gold Shear Property

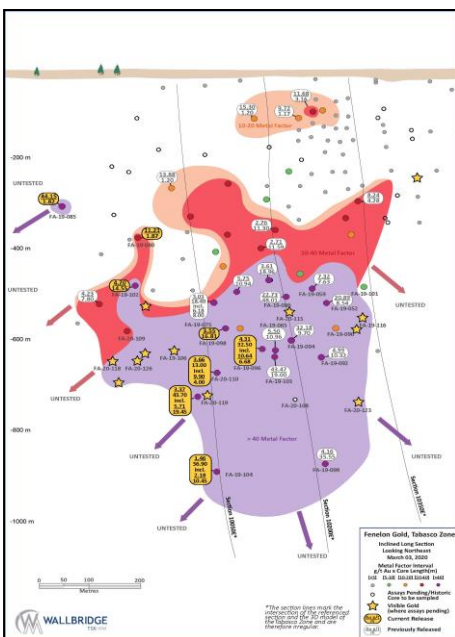
- Located 29 km south of Cranbrook, British Columbia.
- **David Shear Structure** defined for 2000 m strike.
- Hosts high-grade **David Gold Zone**.
- Historic drilling defined gold zone to 150m strike, 100 m depth and 2.35 m widths.
- Surface trench - 7 of 12 PJX rock grab samples grade 68 g/t to 193.90 g/t gold.
- 2019 - 6 of 9 PJX drill holes intersect gold values that range from 3.88 g/t over 2.65 metres to 25.07 g/t over 2.10 m to 100 m depth.
- Anomalous gold values intersected currently to at least 175 m.
- Orogenic style gold occurs as visible gold or with sulphides.
- David Gold Zone open at depth and on strike.
- Next step - drill to locate dilation and expansion of gold zone, similar to Wallbridge's Tabasco gold zone at depth.



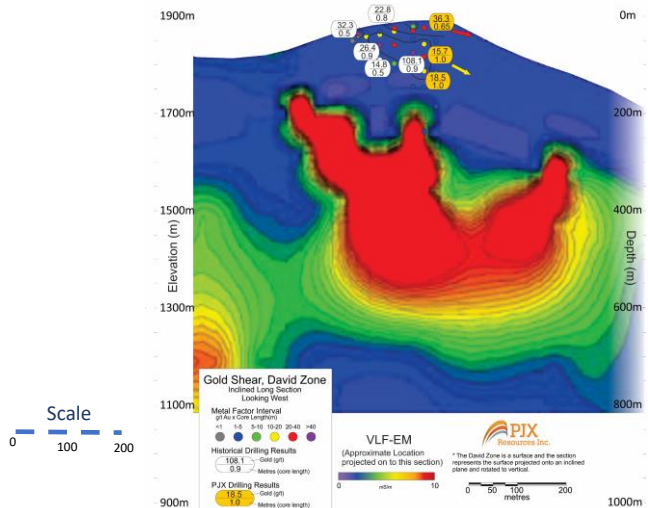
David Zone high-grade gold shallow drill intercepts grades and widths similar to Wallbridge's Tabasco Gold Zone.

David Zone geophysics target untested to depth and along strike

Wallbridge Mining Tabasco Gold Zone Long Section



PJX Resources David Gold Zone Long Section



Weakly conductive VLF geophysical target (Red Area) at depth may reflect a possible increase in sulphide content or dilation (bend or fold) in the shear that could cause an expansion of the David Gold Zone or a possible separate parallel gold zone at depth.